

# MUSTO



Issue One, Autumn Winter 2011

## ZP176 RANGE UNVEILED

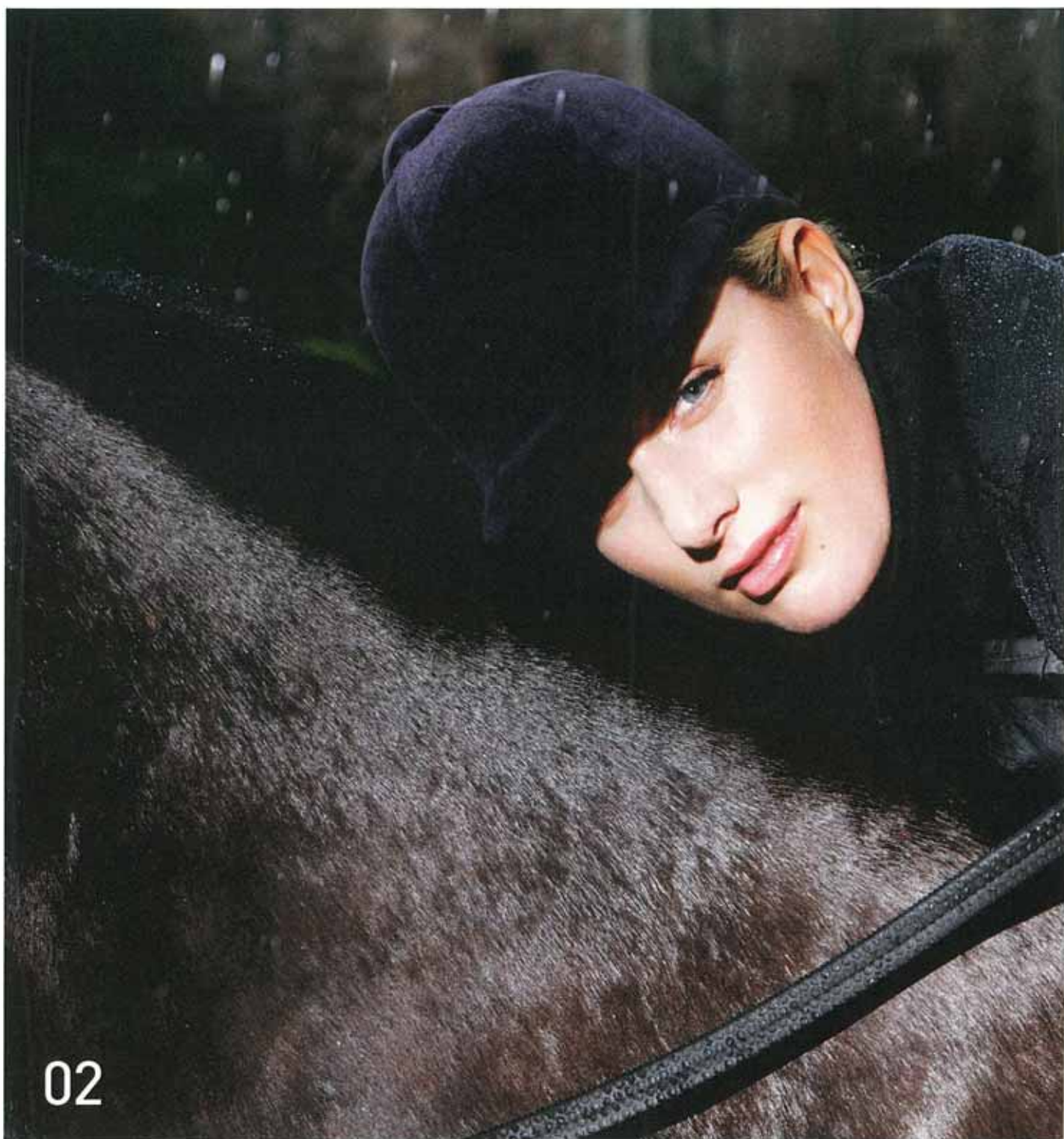
See the new collection from Zara Phillips

## NEW SIGNATURE SCRIPT

View the range to brighten any dull winter's day

## SHARE TINA COOK'S TRADE SECRETS

Top tips for success from the World's best three day event riders



02



## Welcome to issue one of our equestrian catalogue

This season sees the launch of some of our most exciting products yet. We previewed the first ever Zara Phillips collection and unveil our range of 'Signature' clothing.

This issue features an exclusive interview with Zara Phillips, where she talks about the influences behind her collaboration with us. Zara has been wearing Musto products for as long as she can remember, so it seemed only natural that the 2009 World Eventing Champion should design a range of technical clothing which is both functional and stylish.

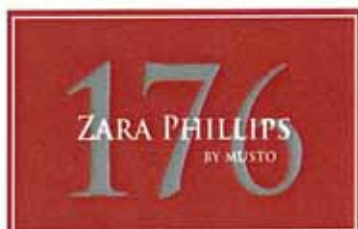
Meanwhile our 'Signature' collection is packed full of bright colours and fun fabrics that are equally at home down at the yard or on the High Street. From jackets to fleeces, gilets to shirts, there's something for every country enthusiast.

Read up on Tina Cook and William Fox-Pitt's top tips for success, and don't forget to enter our fabulous competition on page 25.



Nigel Musto

Zara Phillips: Berkeley Castle



## Introducing the Zara Phillips range by Musto

Zara Phillips: European Gold Medallist and World Eventing Champion 2005, World Gold Medallist 2006, BBC Sports Personality of the Year 2006 and reigning World Eventing Champion. Who better to work with to design and develop a range of technical equestrian clothing?

04

### 01 ZP176 TECHNICAL FLEECE LINED JACKET

An athletically styled waterproof jacket with a Polartec® fleece lining and double ended front zip. Articulate sleeves with part concealed elasticated cuffs and Velcro adjustable rubberized tabs. With internal pockets and music ports, this machine washable jacket has a real wow factor.

Sizes: 8-18  
Colours: Black  
CE1820



### 02 ZP176 LONG SLEEVE TECHNICAL TEE

A multi-functional piece; the high wicking fabric helps transfer moisture away from the skin helping the wearer stay warm and dry. Ergonomic sports fit with cover stitch and a long length body with scooped hem, makes this an ideal layering piece this winter.

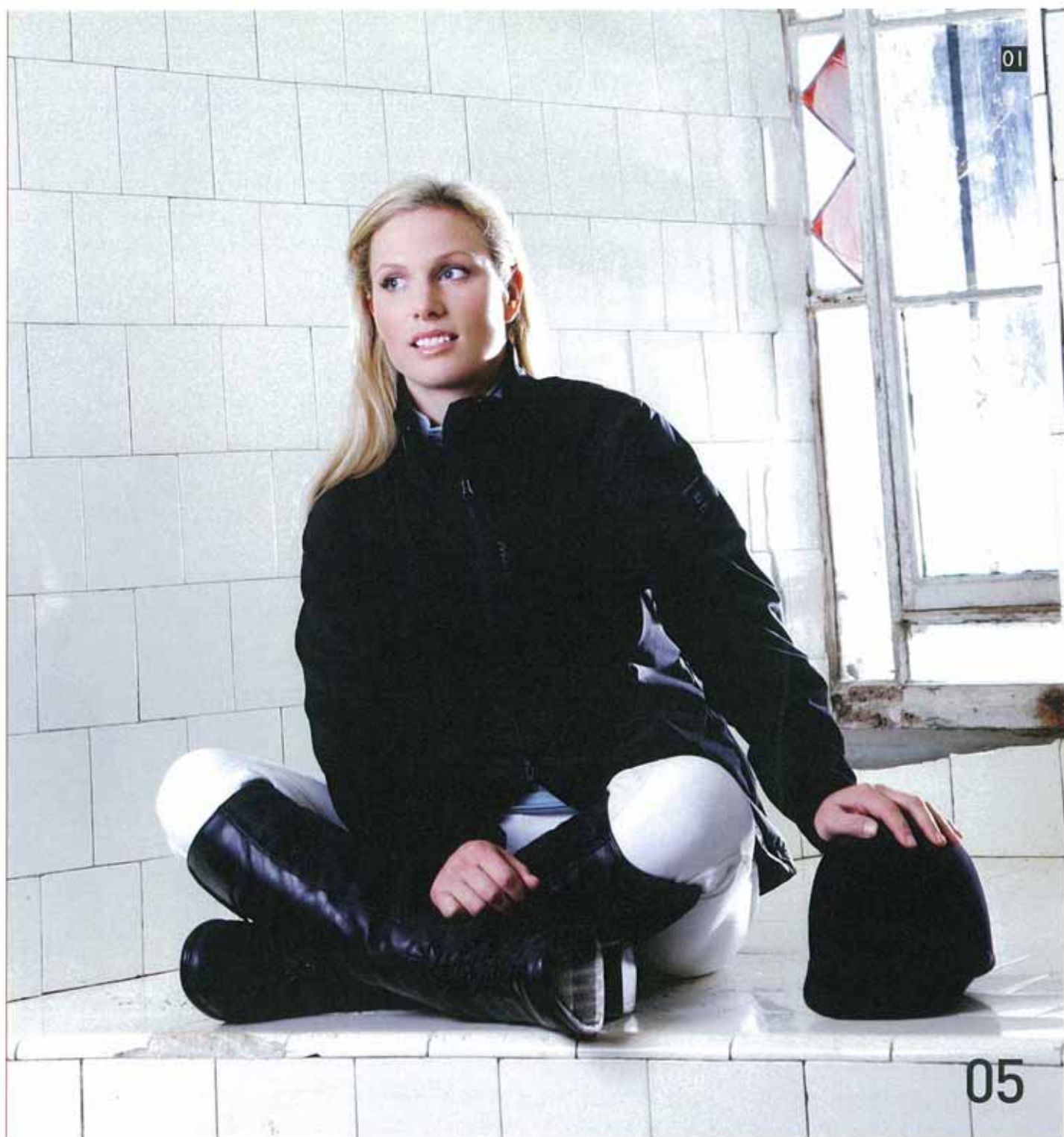
Sizes: 8-18  
Colours: Black  
CE1480

### 03 ZP176 WADDED GILET

This gilet is showerproof and breathable and made with a flattering quilting detail and lightweight insulating polyester wadding. With a microfleece inner lining, double ended front zip and internal pockets, you will want to wear this everywhere you go.

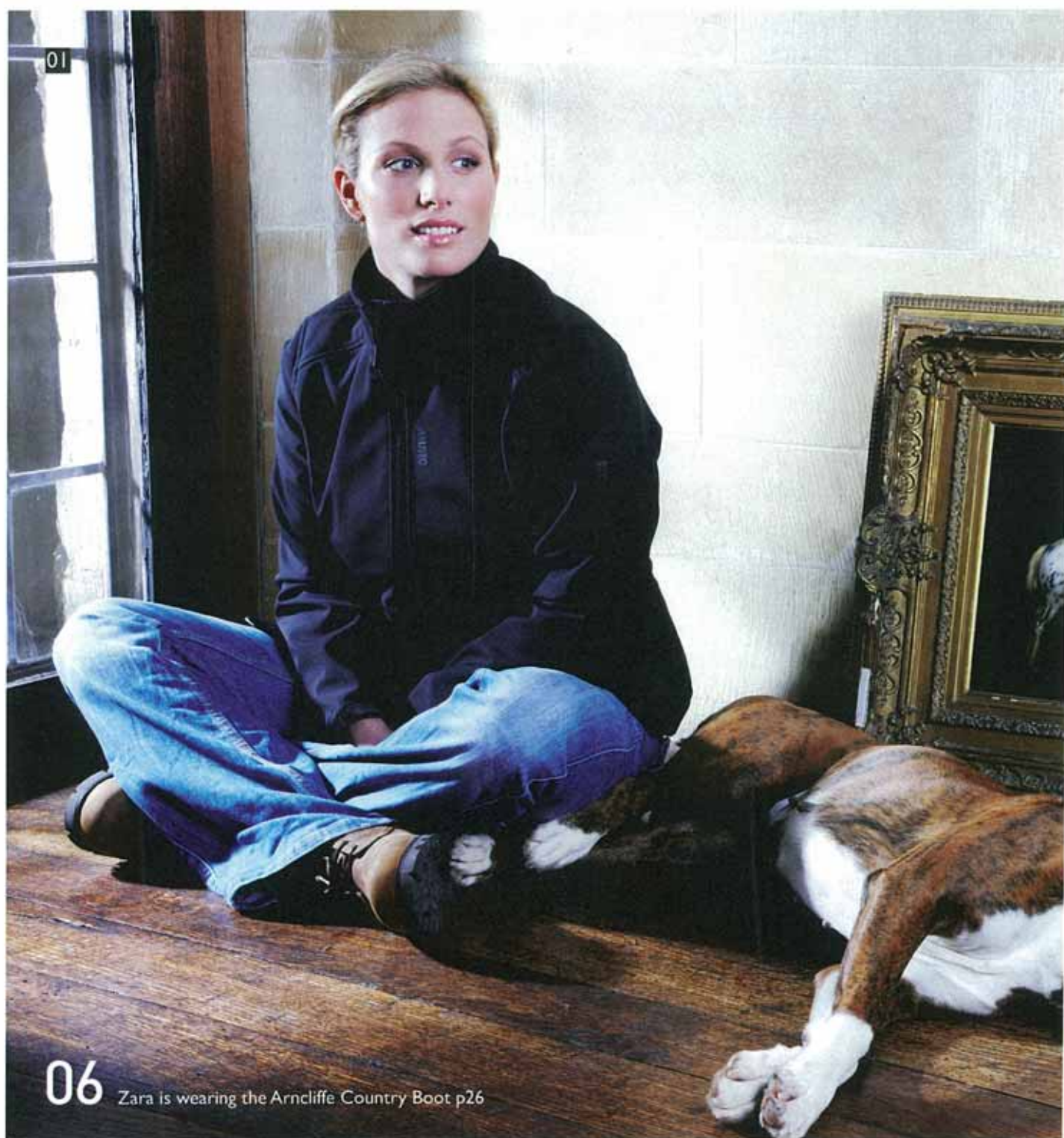
Sizes: 8-18  
Colours: Black  
CE1450





01

05



01

06 Zara is wearing the Arncliffe Country Boot p26

“My favourite  
in the range is the  
Soft Shell Jacket”



**01 ZP176 SOFT SHELL JACKET**

A sporty, stylish soft shell jacket with super soft fur pile inner that feels great against the skin. A sports fit with articulated sleeves and Velcro adjustable rubberised cuffs, makes this jacket one of Zara's favourites for Autumn Winter 2010.

Sizes: 8-18

Colours: Black

CEI430



**02 ZP176 MICr OFLEECE ZIP NECK**

A flattering, functional fleece that's perfect for dry, blustery days when worn over a technical base layer or as an additional insulating layer. Made from Polartec<sup>®</sup> fleece giving this Zip Neck a super soft feel, makes this an ideal piece for the stables.

Sizes: 8-18

Colours: Black, Summer red

CEI470

07



01



**01 ZP176 TRAINING JACKET**

A distinctive waterproof, windproof and breathable jacket that looks great in and out of the saddle. Complete with a roll away peaked hood, double ended centre front zip and insulating fleece in sleeves. Scooped hem and inner security pockets mean you can wear this anywhere.

Sizes: 8-18  
Colours: Black  
CE1410

02



**02 ZP176 HOODED FLEECE**

With a herringbone tape over hood and drawcord, and large kangaroo pouch this fashionable hoody in technical Polartec® fleece is guaranteed to keep you warm this winter.

Sizes: 8-18  
Colours: Black, Summer Red  
CE1460

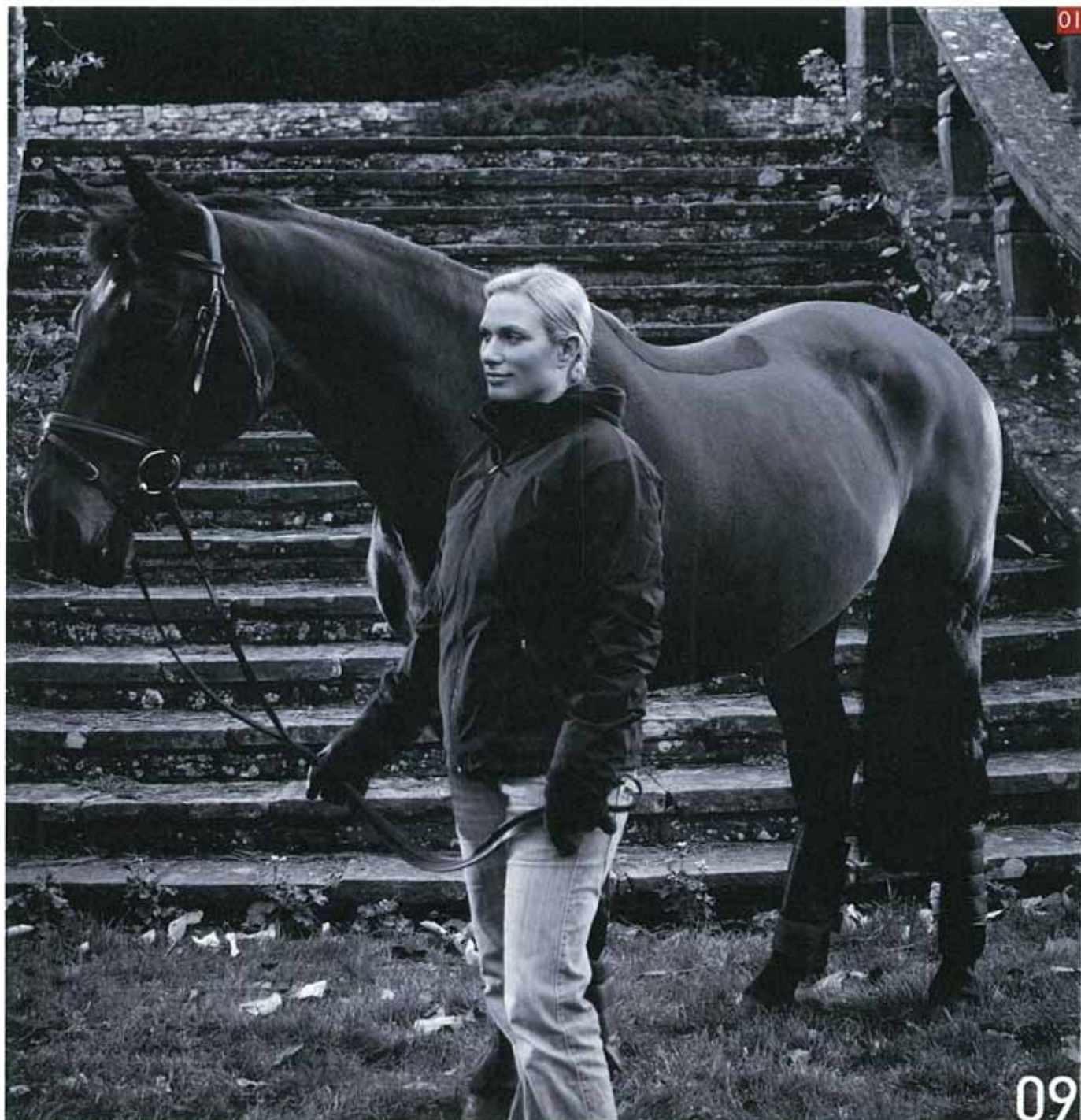
03



**03 ZP176 HOODED SWEAT**

A versatile, functional sweat with chunky drawcord, large kangaroo pouch and machine washable, makes this an ideal layering piece with our Wadded Gilet.

Sizes: 8-18  
Colours: Black, Summer Red  
CE1830



## Zara Phillips has been wearing Musto as long as she can remember.

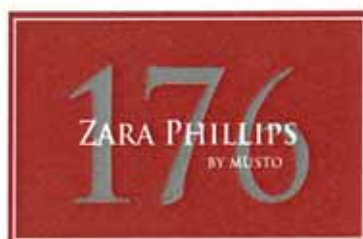
"I think it must have started through my mum being keen on us all going sailing", she recalls.

"I can remember both myself and my brother wearing Musto jackets and then when it came to spending more time riding, the Musto stuff we had did the job perfectly."

A few years on and Zara is launching her own range of Musto stuff.

ZP 176 is the first collaboration between Zara Phillips and Musto. A collection of equestrian wear with the emphasis on matching practicality with style, it makes the most of the experience she's had over a lifetime consumed with training, competing and working with horses.

Musto is best known for engineering clothes, giving them form and function, making them work as well as look good. Company founder Keith Musto used his experience as an Olympic Yachtsman to revolutionise sailing gear. Now the ZP 176 range has taken equestrian wear to a new level.



# 10

The practical insight that Zara brings to Musto ensures that proud tradition is continued. Not that the reigning World Eventing champion is given to such grand statements.

"It was pretty simple at the start," she explains. "I wanted to work on a collection that I would wear, not just one I could put my name to. Then it got more complicated, in that I wanted it to keep me warm and dry, allowing me to work hard and also be stylish enough to wear when I wasn't working."

"The job these clothes have got to do is the most important thing. That involves making subtle adjustments in the way they're cut and the way they sit, allowing for flexibility in the arms of a jacket, but making sure the jacket itself is tailored well."

## "I can remember both myself and my brother wearing Musto jackets"

It's the challenge of making something very demanding look completely natural. Zara knows this nowhere near as straightforward as it might seem.

"That's my job," she says, characteristically matter-of-fact. "I take it as a compliment when people say it looks like what I do is easy. I guess that's what we're striving for – to make something that's very difficult look like it doesn't take a great deal of effort. But it is hard work."

"When you've got that sort of passion and enthusiasm for what you do, it's only right that you should be able to rely on what you're wearing. I hope people wear my clothes and then walk away from that environment and feel comfortable and stylish."



# Top Dressage Tips



Picture credit: Kir Houghton

1. Make sure you know your test.

2. Make sure your horse is warmed up within enough time in case something needs changing.

3. Make sure you take your boots, tail bandage off and the appropriate tack on.

4. Try and give yourself enough time to trot around the arena so the horse can get used to it.

5. Make sure you don't start before the horn and if the horn has sounded, be in the arena before the 45 seconds is up.

6. Always acknowledge the judges with a smile or hello.

7. It may help to watch other people first, if you can, to help learn the test and see what the judges are looking for.

8. Try to stay relaxed and present your horse to the best of your ability it might sound obvious but it is important to stay focused.

9. Enjoy it!



## Introducing our new Signature range

Our Equestrian Collection for Autumn/Winter 2011 combines technical, innovative product with fashionable, colourful sweats and fleeces that offer style and function whether you're at the yard or on the High Street. Its a range encompassing the clothing aspiration of every dedicated equestrian enthusiast from hacking and schooling through to competition.

The Equestrian Technical collection includes all Musto favourites from Suffolk Coats to Arctic Jackets, Combination to Paddock Jackets. All include bright new colourways and

script detailing unique to the Autumn/Winter range.

New to Autumn/Winter 2011 is the Musto Signature Collection. Feminine, quilted jackets, fleeces and sweats in luxurious fabrics, and bright striking colours are sure to brighten any dull winter's day.

Musto script logo, prints and button trims can be seen throughout this range, offering new attention to detail, with a new bold fun look for any wearer. Stand out in any crowd with these new, exciting products!

*Musto*  
*Signature*

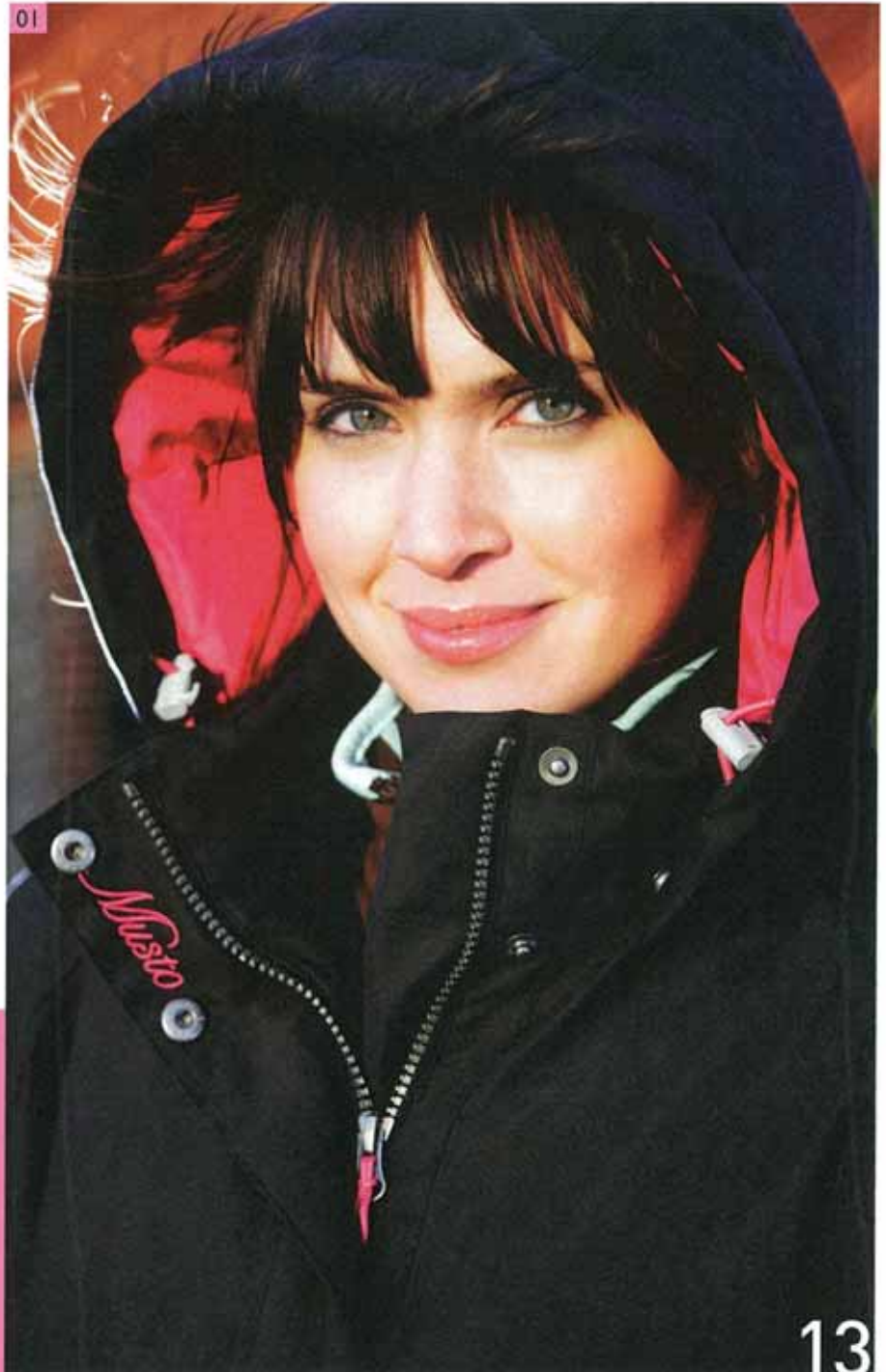
**01 ARCTIC JACKET**

Waterproof, breathable duck down with a removable two way peaked hood and double ended front zip makes this insulating, waterproof jacket ideal for spectating or teaching but stylish enough to wear whilst out shopping with friends.

Sizes 8-18

Colours Navy, Black

CE0123



01



### 01 PADDOCK JACKET

This jacket is a favourite amongst riders of all levels and disciplines – a sporty, fashionable, functional riding jacket. Breathable and waterproof, with a removable peaked hood and fleece lined make this ideal for any cold winter's day. Gusseted riding vents and inner pockets are just some of the great features that make this a machine washable Musto classic.

**Sizes:** 8-18

**Colours:** Dolphin/Dark Brown,  
Geranium/Dark Brown,  
Black/Geranium  
CE0991

02



### 02 YARD JACKET

A breathable, waterproof jacket with fleece lining and inner security pocket makes this a versatile, classic equestrian jacket ideal for yard work, riding and casual wear.

**Sizes:** 8-18

**Colours:** Navy, Deep Purple  
CE1200

03



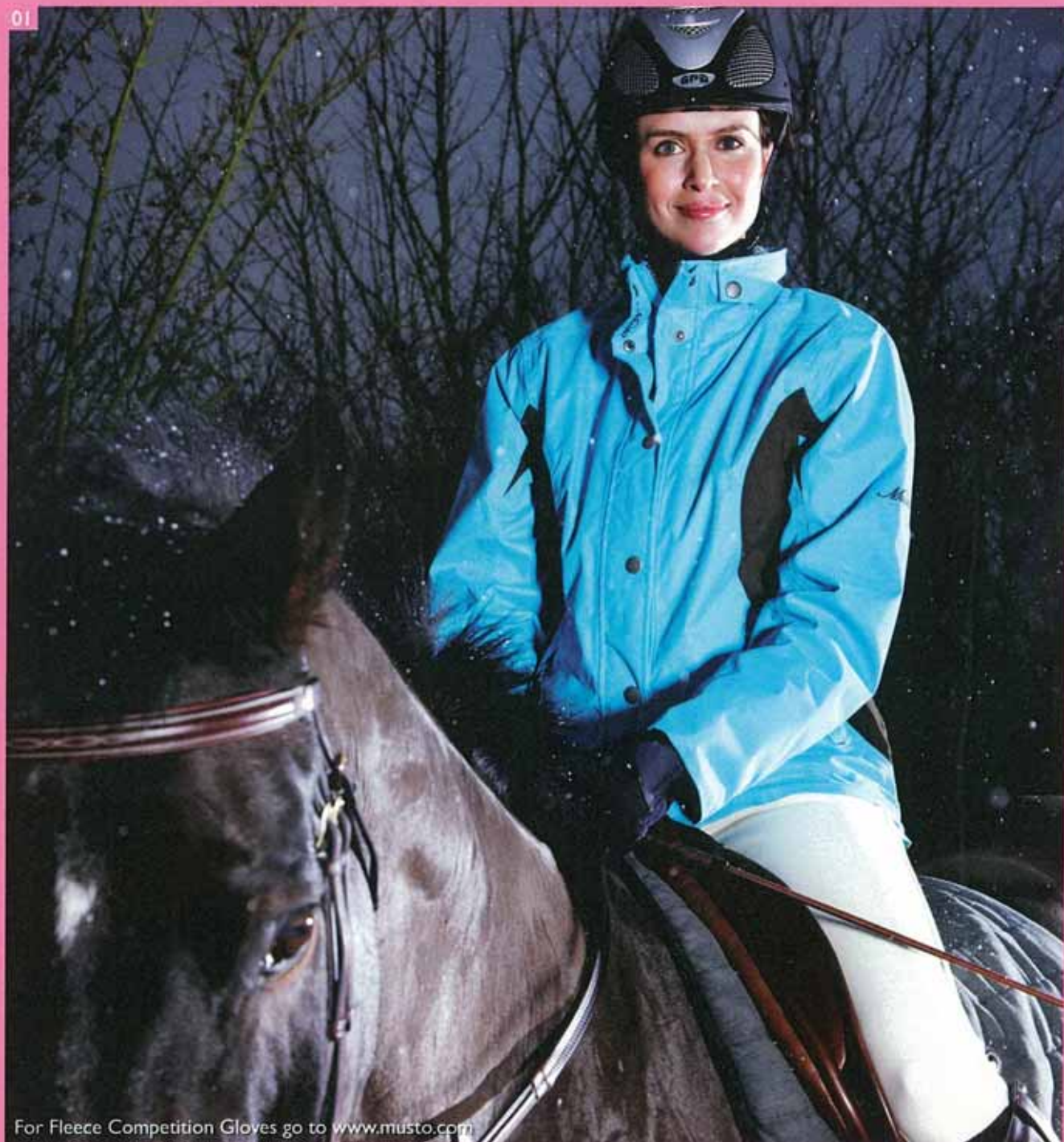
### 03 BROMONT JACKET

A lightweight, synthetic insulating jacket with double ended zip, two external pockets, eye catching internal stripes and inner security pocket. A warm and stylish jacket which looks great when worn with breeches or teamed with jeans.

**Sizes:** 8-18

**Colours:** Navy, Dark Brown, Merlot  
CE1360

01



For Fleece Competition Gloves go to [www.musto.com](http://www.musto.com)



16

For boots see p24  
For Fleece Competition Gloves go to [www.musto.com](http://www.musto.com)



#### 01 SUFFOLK JACKET

Ideal for hacking, schooling, spectating and teaching in wet weather. Add one of Musto's colourful fleece or sweats for an insulating layer when the weather turns really cold. With a waterproof, breathable laminate, removable hood, large pockets, riding vents and inner pockets, you can see why this is one of Musto's favorite jackets this winter.

Sizes: 8-18

Colours: Dark Brown, Navy  
CE0142

#### 02 HASTINGS SWEAT

Musto signature logo to back neck and knitted hem with drawcord feature, this is a striking versatile sweat that looks great with our technical outer wear.

Sizes: 8-18

Colours: Navy/Oxide, Dark Brown/Crystal Blue,  
Deep Purple/Geranium  
CE1270

### 03 COMBINATION JACKET

The ever popular Musto classic – technical, practical and full of features. Removable hood, fleece lined collar, two way zip and inner drawcord. A zipped in gilet gives versatility on colder days when two jackets are better than one. Whilst the detachable gilet is perfect for warmer Autumn days.

Sizes: 8-18

Colours: Navy/Geranium,  
Merlot/Dark Brown,  
Dark Brown/Dolphin  
CE0621

03



04



### 04 HARRISBURGH GILET

A flattering gilet with contrast colour panels that looks great with our hoodies and fleeces. Packed full of Musto's classic features such as fun candy lining, double ended front zips, drawcord hem and ipod pocket this gilet is a must have this winter.

Sizes: 8-18

Colours: Bubblegum/Navy, Navy,  
Dolphin/Navy  
CE1370

05



06



### 05 SILVERWOOD GILET

A stylish gilet with distinctive quilting detail and eye catching lining that looks great when worn on the yard or on the high street. This gilet has double ended front zips, scooped hem, inner security pocket and is machine washable.

Sizes: 8-18

Colours: Deep Purple,  
Dark Brown, Dolphin  
CE1380 0

### 06 FEILDING SWEAT

A generous zip neck, 6 button fastenings and contrast colour inner neck and placket, this sweat also features a knitted hem with interesting drawcord details.

Sizes: 8-18

Colours: Merlot, Bubblegum,  
Navy, Oxide  
CE1290

### Hartwell Hoody

A bright bold hoody that's sure to be a favourite this season. Contrast drawcord and inner hood fabric, three button placket with and a large kangaroo pouch.

Sizes: 8-18

Colours: Navy/Oxide, Grey Marl/Dolphin,

Deep Purple/Merlot,

Crystal Blue/Geranium

CEI 300



# TINA COOK

## In My Kit Bag

Devacoux Jumping & Dressage Saddles    Musto Black Competition Gloves

Prolite XC Boots    Musto Competition Shirts

Jumpers Horse Travel Line Boots    Rodney Powell Back protector

Non slip Pads to put under saddle.    Point 2 Air Jacket

Coollex Rugs    HSI Helmet



## Top 10 X-Country Tips

1. Remember to have some breakfast.
2. Keep horse and rider hydrated.
3. Ensure your horse is fit enough.
4. Arrive in plenty of time so you are not in a rush.
5. Walk the xc course and look carefully at all possible options at each fence.
6. Have a warmup plan for each phase.
7. Keep consistent rhythm between fences.
8. Slow down and balance before a combination.
9. Keep your horse walking after finishing until it stop blowing.
10. There's always another day if things don't go to plan.



Paddock Jacket p14  
Breeches p20



01



02

#### 01 BRIGADOON SWEAT

A functional sweat that's ideal for chilly mornings and evenings at the yard. Ribbed cuffs, hem and side panels for a flattering fit make this an ideal piece for winter.

Sizes: 8-18

Colours: Dark Brown,  
Geranium, Navy  
CEI280

#### 02 NORWOOD HOODY

A warm, cosy fleece ideal for cold frosty days down the stables. Contrast drawcord and bold striped inner hood fabric, with a 3 button placket, large kangaroo pouch, this hoody is full of bold contrasting features.

Sizes: 8-18

Colours: Dolphin, Dark Brown,  
Deep Purple  
CEI310



04

#### 03 CHRISTCHURCH FLEECE

A feminine fleece jacket ideal as an extra layer on really cold days. Packed full of contrast colour details and two front pockets with button fastenings this fleece is a staple in any wardrobe.

Sizes: 8-18

Colours: Geranium, Bubblegum, Navy  
CEI330



03

#### 04 WINCHFIELD FLEECE

A super warm fleece that looks great teamed with jeans, boots and our bright accessories. A warm high loft fleece with a super soft handle this fleece also has a zip neck with cotton canvas colour collar trim and placket, open cuffs and hem with drawcord feature to the side and is machine washable.

Sizes: 8-18

Colours: Navy, Ecru, Dolphin  
CEI320

#### 05 ELMWOOD RUGBY

This is a classic cotton rugby in soft muted colours that looks great worn with jeans or jods. Cotton collar and placket with four branded Musto buttons, large Musto logo across chest in contrast colour and button and ribbon details on left side vent. You will want one in every colour!

Sizes: 8-18

Colours: Deep Purple, Merlot, Bubblegum

CE1250

#### 06 MANSFIELD RUGBY

Cotton twill collar with buttoned placket, candy stripe fabric details on underside of the collar and slim fit sleeves, this is a classic essential ideal for layering under sweats and fleeces.

Sizes: 8-18

Colours: Geranium/Bubblegum, Navy/Oxide, Deep Purple/Crystal Blue

CE1230

#### 07 CALEDON RUGBY

Cotton canvas collar and placket with Musto branded buttons, this is a colourful rugby sure to brighten any dull winters day.

Sizes: 8-18

Colours: Dark Brown/Crystal Blue, Geranium/Deep Purple, Navy/Bubblegum, Dolphin/Grey Marl

CE1220

#### 08 WOODHILL RUGBY

A classic cotton rugby in bright colours with subtle feminine details. Contrast colours under collar with a long flattering placket with Musto branded buttons, chest pocket detail with button and ribbon detail and large Musto logo across the back.

Sizes: 8-18

Colours: Bubblegum, Deep Purple, Crystal Blue

CE1260

05



06



07



08





#### 01 MORELANDS POLO

This polo has knitted collar and cuffs with contrast colour tipping under collar and around cuffs. Perfect pique polo with lycra for a flattering fit that complements our sweats, fleeces and technical outerwear.

Sizes: 8-18

Colours: Navy/Oxide,  
Geranium/Navy,  
Grey Marl/Dolphin  
CEI210



#### 02 BLANVILLE SHIRT

A feminine shirt with eye catching candy stripes, which can be worn for smart or casual occasions; this shirt looks great with knits for a classic country look.

Sizes: 8-18

Colours: Deep Purple, Merlot  
CEI340

#### 03 BUCKHEATH SHIRT

With a soft handle, eye catching stripes and contrast colour to inner cuffs, this shirt is packed full of Musto features. In a feminine cut, this shirt can be worn on any occasion.

Sizes: 8-18

Colours: Dolphin  
CEI350

**01****01 MUSTO BREECHES**

Classically designed full seated breeches constructed from Schoeller® Prestige fabric with full Clarino® seat. These breeches are ideal for competition or everyday use.

Sizes: 8-18

Colours: Natural, White  
CE0501

**02****02 SNUG JODS**

Extremely warm, comfortable and hardwearing these jods are ideal for riding and yard work on cold winter days.

Sizes: JL - XL

Colours: Navy, Black, Dark Brown  
CE0571

**03****03 ESTEEM BREECHES**

Fashionable, functional breeches incorporating Lycra for a fantastic fit, comfort and durability perfect for everyday wear.

Sizes: 8-18

Colours: Dark Brown, Geranium, Navy  
CE0541

01



#### 01 ESSENTIAL FLEECE BEANIE AND SCARF

Anti-pilling, warm, soft polyester fleece with a reverse contrast colour and Lycra trim.

Sizes: ONE SIZE  
AL2360 BEANIE  
AL2370 SCARF

02



#### 02 STRIPED SOCKS

A combination of natural and synthetic yarns ensures warmth, wicking and absorption. A padded footbed and ankle support make these ideal for cold winter mornings.

Sizes: S, M, L  
Colours: Navy, Bubblegum  
AL3911

03



Chestnut

#### 03 DEEPDALE COUNTRY BOOT

Waterproof and breathable, with a tapered, curved upper to increase comfort around calf. YKK heavy gauge plastic zip up the side and vibram outdoor sole providing excellent grip durability. Supplied with 4 changeable colourful tassles.

Sizes: 5-14  
Colours: Brown, Chestnut  
FC0560

04



05



06



07



**04 SIGNATURE CAP**

A cotton twill cap with large Musto Signature embroidery that you will love so much you will want both great colours.

Sizes: ONE SIZE

Colours: Navy, Bubblegum  
AL2650

**05 WINTER FUR HAT**

Super soft nylon wadded hat with fold down ears for the deep winter. Trimmed with synthetic fur to keep the warmth in!

Sizes: ONE SIZE

Colours: Fudge, Pale Grey  
AL3820

**06 ARNCLIFFE COUNTRY BOOT**

Waterproof and breathable, with 360 ankle cushioning and Vibram sole with torsion innersole shank to increase heel to toe stability, makes these boots ideal for all country pursuits.

Sizes: 5-14

Colours: Brown  
FC0010

**07 PACKAWAY HI-VIS VEST**

EN471 approved safety vest that packs away neatly so it can be easily stored or attached to the saddle for when the dark creeps in. This is a must have for all equestrian lovers!

Sizes: Junior, Adult

Colours: Hi Vis Yellow  
AC0960

**08 SIGNATURE BEANIE, SCARF AND GLOVES**

Brightly striped set with Musto Signature detail, all items are machine washable. In bright bold stripes, and is a must-have this winter.

Sizes: Beanie and Scarf ONE SIZE,

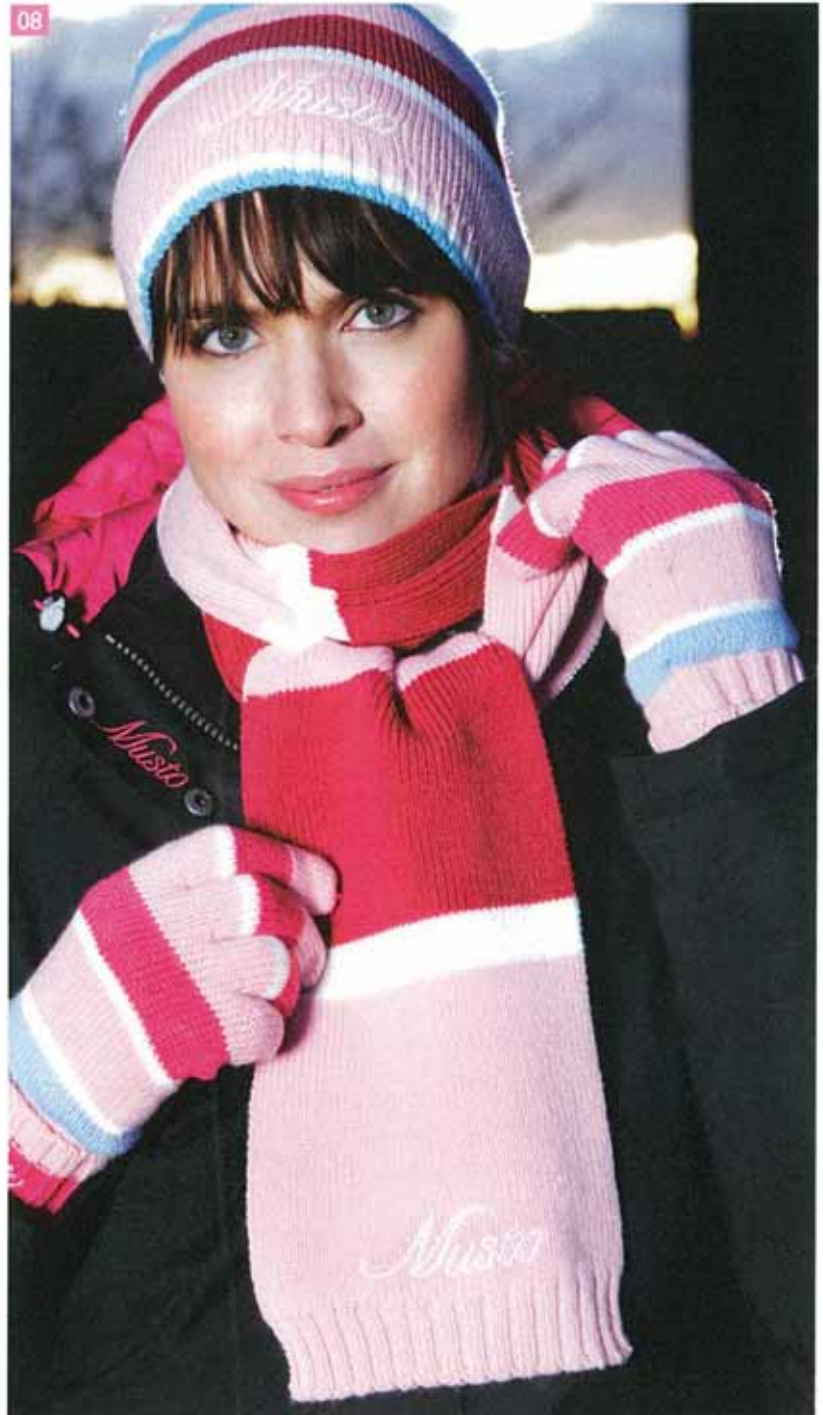
Gloves S, M, L

Colours: Navy, Bubblegum

AL2660 BEANIE

AL1680 SCARF

AL2670 GLOVES



# MUSTO *Equestrian Stockists*

## ★ VICTORIA

<i>O'Deas Saddlery</i>	<i>Shepparton 3630</i>	<i>+61 (0)3 5821 3385</i>
<i>Horseland Geelong</i>	<i>Geelong 3220</i>	<i>+61 (0)3 5229 1183</i>
<i>The Dancing Horse</i>	<i>Garfield 3814</i>	<i>+61 (0)3 5629 1010</i>
<i>Neightec Saddlery</i>	<i>Benalla 3672</i>	<i>+61 (0)3 5762 5600</i>
<i>Horse Habits Saddlery</i>	<i>Benalla 3672</i>	<i>+61 (0)3 5762 3999</i>
<i>Ascot Saddlery</i>	<i>Flemington 3081</i>	<i>+61 (0)3 9376 5444</i>
<i>Oceans Clothing</i>	<i>Lorne 3232</i>	<i>+61 (0)3 5289 2649</i>
<i>Horse in the Box</i>	<i>Lilydale 3140</i>	<i>+61 (0)3 9735 9171</i>

## ★ NEW SOUTH WALES

<i>Horseland Richmond</i>	<i>Richmond 2753</i>	<i>+61 (0)2 4578 2477</i>
<i>Horseland Dural</i>	<i>Dural 2158</i>	<i>+61 (0)2 9651 4300</i>
<i>Horseland Terrey Hills</i>	<i>Terrey Hills 2084</i>	<i>+61 (0)2 9986 1800</i>
<i>Horseland Narellan</i>	<i>Narellan 2567</i>	<i>+61 (0)2 4647 7717</i>
<i>Horseland Tuggerah</i>	<i>Tuggerah 2259</i>	<i>+61 (0)2 4351 1527</i>
<i>Brighton Saddleworld</i>	<i>Kensington 2033</i>	<i>+61 (0)2 9662 2588</i>
<i>Marsh Carney</i>	<i>Scone 2337</i>	<i>+61 (0)2 6545 1599</i>
<i>Saddleworld Dural</i>	<i>Dural 2158</i>	<i>+61 (0)2 9651 2337</i>

## ★ AUSTRALIAN CAPITAL TERRITORY

<i>Horseland Fyshwick</i>	<i>Fyshwick 2609</i>	<i>+61 (0)2 6280 6657</i>
---------------------------	----------------------	---------------------------

## ★ SOUTH AUSTRALIA

<i>Bonnetts Saddlery</i>	<i>Kent Town 5069</i>	<i>+61 (0)8 8362 7846</i>
--------------------------	-----------------------	---------------------------

## ★ QUEENSLAND

<i>Aitkens Saddlery</i>	<i>Loganholme 4129</i>	<i>+61 (0)7 3209 7506</i>
<i>Saddleworld Horse &amp; Rider</i>	<i>Rockhampton 4700</i>	<i>+61 (0)7 4927 6353</i>
<i>Gympie Saddleworld</i>	<i>Gympie 4570</i>	<i>+61 (0)7 5482 2320</i>

## ★ WESTERN AUSTRALIA

<i>Saddle Plus</i>	<i>Byford 6122</i>	<i>+61 (0)8 9526 2292</i>
<i>Saddleworld</i>	<i>Busselton 6280</i>	<i>+61 (0)8 9751 3344</i>
<i>Evolution Equestrian</i>	<i>Margaret River 6285</i>	<i>+61 (0)8 9758 7127</i>
<i>Horseland Midland</i>	<i>Midland 6056</i>	<i>+61 (0)8 9274 5155</i>

## ★ MUSTO LIFESTYLE

*Musto lifestyle apparel is available in leading boutiques across Australia and New Zealand.*



*New Zealand  
Equestrian Stockists*

**MUSTO**

- |  |   |                          |
|--|---|--------------------------|
| ★ <i>Clareville Saddlery</i>           | <i>Carterton<br/>North Island</i>               | <i>+64 (0)6 379 6494</i> |
| ★ <i>Stirrups of Newmarket</i>         | <i>Newmarket, Auckland<br/>North Island</i>     | <i>+64 (0)9 266 6616</i> |
| ★ <i>PJ Stevenson</i>                  | <i>Cambridge<br/>North Island</i>               | <i>+64 (0)21 521 860</i> |
| ★ <i>Forbes &amp; Co</i>               | <i>Hastings<br/>North Island</i>                | <i>+64 (0)6 878 7830</i> |
| ★ <i>Berry Equestrain Supplies</i>     | <i>Levin<br/>North Island</i>                   | <i>+64 (0)6 368 3192</i> |
| ★ <i>Clarkes Saddlery</i>              | <i>Belfast, Christchurch<br/>South Island</i>   | <i>+64 (0)3 323 6536</i> |
| ★ <i>Alpine Saddlery</i>               | <i>Queenstown<br/>South Island</i>              | <i>+64 (0)3 422 7464</i> |
| ★ <i>Timaru Saddlery &amp; Harness</i> | <i>Timaru<br/>South Island</i>                  | <i>+64 (0)3 688 6567</i> |
| ★ <i>Richmond Saddlery</i>             | <i>Nelson<br/>South Island</i>                  | <i>+64 (0)3 544 4177</i> |
| ★ <i>Canterbury Equestrian</i>         | <i>Templeton, Christchurch<br/>South Island</i> | <i>+64 (0)3 349 6241</i> |



*“Musto’s attention to detail in colour and fabric means that everyone I have told about them has loved them and thanked me for the inside information.”*

*Olympian Eventer Megan Jones*

# MUSTO

MUSTO AUSTRALASIA: 28B ROGER STREET, BROOKVALE, NSW 2100, AUSTRALIA  
T: +61 (0)2 9907 4141 or NZ TOLL FREE: 0800 501 124 F: +61 (0)2 9907 4140

[WWW.MUSTO.COM.AU](http://WWW.MUSTO.COM.AU)